



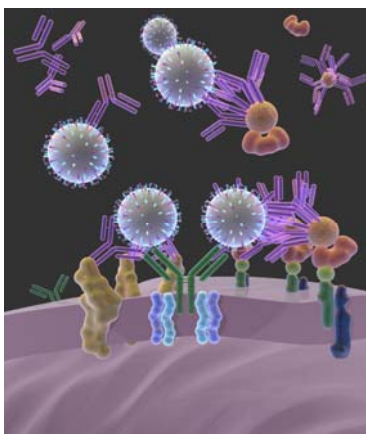
Research News

July 2011

News Headlines

- Dr. Niewiesk's Research Cover of Blood
- Dr. Hoet Infection Control in the Clinic
- Dr. Jean Schelhorn: On the Move!
- Grant Writing Workshop: July 20
- Focus on Shared Resources: CTSS Biostatistics
- CVM Council for Research Update
- Vet Student Summer Program Update
- Recent Grant Awards & Publications
- Upcoming Seminars and Workshops
- Grant Support Office Update:
 - Projects
 - Funding Opportunities
 - Policy Updates –
 - What You Need to Know – Transfer/Adoption of Research Animals

Cover Story of
the Journal
Blood in June
2011



Kim D, Huey D, **Oglesbee M, Niewiesk S.** Insights into the regulatory mechanism controlling the inhibition of vaccine-induced seroconversion by maternal antibodies. *Blood*. 2011 Jun 9;117(23):6143-51. **(Cover Art by Mr. Tim Vojt)**

Environmental Study Assists MRSA Control



Dr. Armando Hoet and a team of microbe detectives have provided new data to support methicillin-resistant *Staphylococcus aureus* (MRSA) control programs in veterinary settings. Dr. Hoet's team determined the prevalence of MRSA on specific human and animal contact surfaces during a non-outbreak period. A total of 156 samples were collected from various clinical settings. MRSA was isolated and identified by pre-enrichment culture and standard microbiology procedures. Specific staphylococcal chromosome markers were also determined. MRSA was detected in 12% (19/157) of the hospital environments sampled. No significant difference was observed between animal and human contact surfaces in regard to prevalence and type of isolates. Similar to other environmental settings surfaces touched by multiple people (doors) and patients (carts) were contaminated with MRSA. The results from this study identified specific surfaces in a veterinary environment that need to be targeted when designing and executing infection control programs.

Hoet AE, Johnson A, Nava-Hoet RC, Bateman S, Hillier A, Dyce J, Gebreyes WA, Wittum TE. Environmental Methicillin-Resistant *Staphylococcus aureus* in a Veterinary Teaching Hospital During a Non-outbreak Period. *Vector Borne Zoonotic Dis*. 2011 Jun;11(6):609-15.

Commercialization Office on the

Move - Dr. Jean Schelhorn's office has been located on the third floor of VMAB. After the 4th of July, Dr. Schelhorn's new office location will be 100C in Sisson. If you have not yet met Jean and this new location is now closer to you than the VMAB location, please plan to stop in and connect with her; she loves to host conversations, especially on the translation of CVM research to market applications and market facing partners. Rumor has it that Jean is hoping her next location will be somewhere near the hospital clinicians to enable her to get to know more and more of the CVM family.

June 2011 Animal Care and Use newsletter now available

The June 2011 edition of the "Animal Care and Use Newsletter" is now available. Topics include tips for preventing protocol drift and maintaining compliance, a message from the Institutional Animal Care and Use Committee chair, guideline updates recently approved by the IACUC, a description of the animal handling and technique training provided by University Laboratory Animal Resources, and information regarding early removal criteria. [View online.](#)

Focus on Shared Resources: CTSS

Biostatistics - Biostatistical and Design support is provided by the OSU Center for Biostatistics in conjunction with faculty from the Divisions of Biostatistics in the College of Public Health and from the Department of Statistics in the College of Mathematical and Physical Sciences. Research ethics support is provided by faculty in the College of Medicine and the College of Public Health who have played a prominent role in patient advocacy and research ethics and regulatory training in the OSU Medical Center.

For more information visit the [OSU Center for Biostatistics](#)

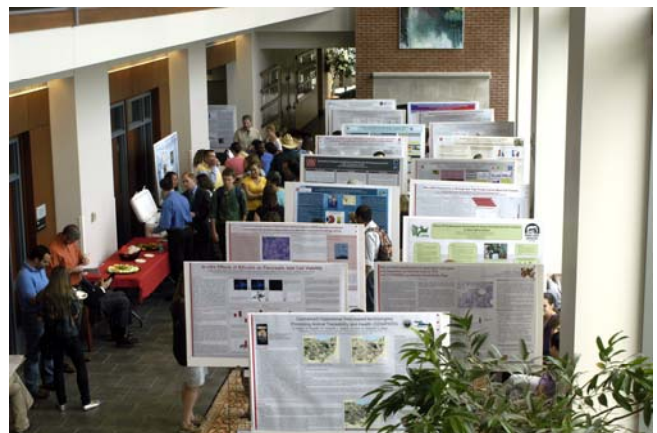
COUNCIL FOR RESEARCH ACTIVITIES – UPDATE

Seven canine grants and four equine grants were submitted to the Office of Research and Graduate Studies for intramural funds. The Council will begin reviewing them shortly and meet later in July to discuss and rank.

SUMMER RESEARCH PROGRAM - UPDATE

We kicked off the start of the Summer Research Program on June 20th with an informal gathering of the students and mentors. Dean King and Dr. Lairmore welcomed everyone to the program. Dr. Lairmore talked about the roles and responsibilities of both the students and the mentors, and then each of the students introduced themselves and said who they are working with and what their summer research project was about. There will be ten Brown Bag Seminars this summer; the first was June 29th at NOON in the Goss Lab Auditorium. Dr. Oglesbee presented his talk, "Zen and the Art of Science". Anyone interested is welcome to attend. The schedule of events can be found at the following link:

<http://vet.osu.edu/research/2011-schedule-events-0>



RECENT SELECTED PUBLICATIONS

Reisen SC, **Schober KE**, Cervenec RM, **Bonagura JD**. Comparison of the Effects of Ivabradine and Atenolol on Heart Rate and Echocardiographic Variables of Left Heart Function in Healthy Cats. *J Vet Intern Med.* 2011;25:469-476

Menendez MI, Clark DJ, Carlton M, Flanigan DC, Jia G, Sammet S, **Weisbrode SE**, Knopp MV, **Bertone AL**. Direct delayed human adenoviral BMP-2 or BMP-6 gene therapy for bone and cartilage regeneration in a pony osteochondral model. *Osteoarthritis Cartilage.* 2011 Jun 2.

Mundy-Bosse BL, Lesinski GB, Jaime-Ramirez AC, Benninger K, Khan M, Kuppusamy P, Guenterberg K, Kondadasula SV, Ray Chaudhury A, **La Perle KM**, Kreiner M, Young GS, Guttridge DC, Carson WE. MDSC inhibition of the IFN response in tumor-bearing mice. *Cancer Res.* 2011 Jun 16.

Ye W, Xu P, Jen R, Feng E, Zhong S, Li H, Lin SH, Liu JY, **Lin YC**. Zeranol. Down-Regulates p53 Expression in Primary Cultured Human Breast Cancer Epithelial Cells through Epigenetic Modification. *Int J Mol Sci.* 2011;12(3):1519-32.

Rink C, Christoforidis G, Khanna S, Peterson L, Patel Y, Khanna S, Abduljalil A, Irfanoglu O, Machiraju R, **Bergdall VK**, Sen CK. Tocotrienol vitamin E protects against preclinical canine ischemic stroke by inducing arteriogenesis. *J Cereb. Blood Flow Metab.* 2011 Jun 15.

Qin Z, Clements T, Wang L, Khatri M, Pillai SP, Zhang Y, **Lejeune JT**, **Lee CW**. Detection of influenza viral gene in European starlings and experimental infection. *Influenza Other Respi Viruses.* 2011 Jul;5(4):268-75.

Chandler H. Ultraviolet Absorption by Contact Lenses and the Significance on the Ocular Anterior Segment. *Eye Contact Lens.* 2011 Jun 3.

Martin-Vaquero P, **da Costa RC**, **Daniels JB**. Presumptive meningoencephalitis secondary to extension of otitis media/interna caused by *Streptococcus equi* subspecies *zooepidemicus* in a cat. *J Feline Med Surg.* 2011 Jun 1.

Kim D, Huey D, **Oglesbee M**, **Niewiesk S**. Insights into the regulatory mechanism controlling the inhibition of vaccine-induced seroconversion by maternal antibodies. *Blood.* 2011 Jun 9;117(23):6143-51.

Parrula C, Fernandez SA, Zimmerman B, **Lairmore M**, **Niewiesk S**. Measles virotherapy in a mouse model of adult T-cell leukaemia/lymphoma. *J Gen Virol.* 2011 Jun;92(Pt 6):1458-66.

Lai TH, Orellana NG, Yuasa Y, **Rikihisa Y**. Cloning of the Major Outer Membrane Protein Expression Locus in *Anaplasma platys* and Seroreactivity of a Species-Specific Antigen. *J Bacteriol.* 2011 Jun;193(12):2924-30.

McMahon M, Mathie T, Stingle N, Romansik E, Vail D, **London C**. Adjuvant carboplatin and gemcitabine combination chemotherapy postamputation in canine appendicular osteosarcoma. *J Vet Intern Med.* 2011 May-Jun;25(3):511-7.

Burns TA, Westerman T, Nuovo GJ, Watts MR, Pettigrew A, Yin C, **Belknap JK**. Role of oxidative tissue injury in the pathophysiology of experimentally induced equine laminitis: a comparison of 2 models. *J Vet Intern Med.* 2011 May-Jun;25(3):540-8.

Xiong Q, **Rikihisa Y**. The prenylation inhibitor manumycin A reduces the viability of *Anaplasma phagocytophilum*. *J Med Microbiol.* 2011 Jun;60(Pt 6):744-9.

SEMINARS, MEETINGS, AND WORKSHOPS

- **OSU Office of Research: Grant Writing: An Introduction** An interactive workshop on grant writing. Some of the similarities and differences between the funding process from federal/state agencies and private foundations will be addressed. In addition, there will be discussion about best practices for seeking funding, including the COS Funding Opportunities database, and provide examples of writing that is both persuasive and clear. Presenters include Dinessa Solomon, Director, Foundation Relations, and Jeff Agnoli, Office of Research. For more information, contact: agnoli.1@osu.edu
Location: [580 Baker Systems Engineering](#)
Date: Wednesday, 07/20/2011 **Time:** 10:00 AM - 12:00 PM
- **DHLRI Atomic Force Microscopy (AFM) core workshop** on biomedical applications of AFM. Tentatively scheduled September 6 - 9, 9am - 5pm at DHLRI AFM Core Lab, Biomedical Research Tower Room 333 contact Tanya.Nocera@osumc.edu if you are interested in attending.
- **The XXV Symposium of the International Association for Comparative Research on Leukemia and Related Diseases**, Tokyo Japan, Sept. 15-1, 2011 <http://iacrlrd.umin.jp/index.html>
- **Interscience Conference on Antimicrobial Agents and Chemotherapy** Sept. 17-21, 2011 Chicago IL Abstracts due May 6, 2011 www.icaac.org
- **18th Annual Midwest Microbial Pathogenesis Conference (MMPC)** will be held October 21-23rd, 2011 in Ann Arbor, MI (hosted by the University of Michigan). <http://sites.google.com/site/mmpconf/>
- **Upcoming training offered through the Office of Sponsored Programs** <http://osp.osu.edu/training/>
 - Research Funding Opportunities – July 15
 - Grant Writing: An Introduction – July 20
 - A large number of [online topics](#) available as well; see website for more information

GRANT SUPPORT OFFICE – UPDATES



Activity from the Grants Support Office June-July

- 1 NIH K01, 1 NIH K18, 1 canine grant, 1 NIH R01, 1 USDA, 1 NIH R21, 1 NIH Fogarty progress report, and 1 NIH eSNAP progress report were processed through the GSO.
- Reviewed 1 contract. Three ePA005s were generated for investigators and 14 ePA005s were reviewed for approval. E-certs, PETS and monthly Problem Projects (49 CVM investigators, 104 active projects, ~\$9M in project expenditures) were managed along with requests for project extensions. At present, 1 NIH R21 and 2 NIH R01 proposals are in process. Held first pilot grant mentoring session: more to come!
- Other program initiatives include development of a pre-review grant evaluation format for CVM investigators, a brown bag education and training seminar series.

UPCOMING FUNDING OPPORTUNITIES

Extramural Funding Opportunities

AmFAR Basic Research: Mathilde Krim Fellowships Mentored 2-year HIV/AIDS research fellowships **Letter of Intent due July 13, 2011**
<http://www.amfar.org/lab/grants/default.aspx?id=9881>

Winn Feline Foundation funds research into health issues affecting cats. Budget requests up to \$35,000. **Deadline July 15, 2011**
http://www.winnfelinehealth.org/Pages/11_Miller_Grant_Announcement_leg_bw.pdf

American Kennel Club ACORN Grants Open Submission: These are small grants (\$12,000 or less (plus 8% indirect costs) for up to 1 year. **Applications may be submitted at any time**, and notice of award decisions will be made within 90 days of application submission. The ACORN program is designed to allow researchers to complete small, relatively short timeframe projects, test research hypotheses, and/or generate preliminary data for possible future grant proposals as larger scale or longer term studies.
<http://www.akcchf.org/research/application-process/acorn-grant-program/>

Maddie's Fund Shelter Medicine Externship provides stipend support to 3rd and 4th year veterinary students interested in externship at adoption-guarantee shelters. **Open application**, see <http://fundingopps.cos.com/alerts/91578>

Barbour Foundation Grants for Universities and Veterinary Schools funds organizations that provide programs to protect, preserve, and nurture companion animals, large animals, native wildlife, and marine species in the United States. Hands on care, animal health/welfare, and veterinary medical research are priorities. **Due July 31, 2011** <http://fundingopps.cos.com/alerts/30171>

Great Lakes Regional Centers of Excellence for Biodefense and Emerging Infectious Diseases Research Funding Opportunities:

- **Career Development Projects: Due August 1, 2011**
<http://glrce.org/docs/2010/2010%20CDP%20II%20RFA.pdf>
- **Research Projects: Due September 1, 2011**
http://www.glrce.org/docs/2011/GLRCE_2011_Research_Project_RFA.pdf

Burroughs Wellcome Fund: Pathogenesis of Infectious Diseases *limited submission opportunity (3 applicants to be put forth from OSU) **Internal letter of intent due (Sept. 12, 2011 (Sponsor due date Nov. 1, 2011))**
<http://rf.osu.edu/fundops/detail.cfm?strFOID=2776>

Pew Scholars Program in Biomedical Sciences *limited submission opportunity (1 applicant from OSU) **Internal letter of intent due Sept. 12, 2011 (Sponsor due date Nov. 1, 2011 by noon)**
<http://rf.osu.edu/fundops/detail.cfm?strFOID=2774>

Searle Scholars Program * limited submission opportunity (1 applicant from OSU) **Internal Letter of Intent due Aug. 8, 2011 (Sponsor due date Sept. 30, 2011)** <http://rf.osu.edu/fundops/detail.cfm?strFOID=2681>

Policy Updates

Off Duty Quarter Support from Research Projects

Beginning Summer Quarter 2011 off-duty quarter compensation from external sources such as research grants and contracts will be limited to 2.5/9. For faculty who have been receiving the full 3 months of compensation from sponsored projects there are two choices. The total compensation may be reduced to 2.5 months or the full 3 month compensation may be paid 2.5 months from sponsored projects and the remaining .5 month from other sources. These other sources can include development funds, appropriate earnings funds, or accumulated release time funds. For questions regarding implementation of this policy, please contact your department HR person or Kristi Pyke (Pyke.2@osu.edu).



UPCOMING FUNDING OPPORTUNITIES (Continued)

USDA Opportunities

AFRI – Food Safety – to support single-function Research Projects and multi-function Integrated Research, Education and Extension Projects, **Letters of Intent required Due July 5; Applications due Oct. 11, 2011**

http://www.nifa.usda.gov/funding/rfas/pdfs/11_afri_food_safety.pdf

Sustainable Agriculture Research and Education Program (SARE), Proposals Due July 14, 2011

<http://www.csrees.usda.gov/fo/sustainableagricultureresearchandeducation.cfm>

Multicultural Scholars Program — NIFA announces the availability of grant funds and requests applications for the Higher Education Multicultural Scholars Program (MSP) for fiscal year (FY) 2011 to conduct undergraduate and D.V.M. scholarship programs to meet national and international needs for training food and agricultural scientists and professionals, or professionals in rural economic, community, and business development. FY 2011 MSP Program Areas of Emphasis — **Veterinary Medicine (First Professional Degree in Veterinary Medicine i.e., D.V.M.)** – specifically targeted is professional entry in food animal veterinary medicine **Due August 22, 2011**

http://www.nifa.usda.gov/funding/rfas/pdfs/11_multicultural.pdf

NIH Funding Opportunities

Systems Approach to Immunity and Inflammation (U19) (RFA-AI-11-017)

National Institute of Allergy and Infectious Diseases **Due August 30, 2011**

<http://grants.nih.gov/grants/guide/rfa-files/RFA-AI-11-017.html>

High- End Instrumentation Grant Program (S10) Due Sept. 19, 2011

<http://grants.nih.gov/grants/guide/pa-files/PAR-11-228.html>

FDA

Minor Use Minor Species Development of Drugs; Research Project Grant (R01) Due August 5, 2011

<http://grants.nih.gov/grants/guide/rfa-files/RFA-FD-10-001.html>

NSF

Division of Molecular and Cellular Biosciences: Investigator-Initiated Research Projects (MCB) - NSF 11-545 The Division of Molecular and Cellular Biosciences (MCB) supports fundamental research and related activities designed to promote understanding of complex living systems at the molecular, subcellular, and cellular levels. **Due Sept. 6, 2011**

<http://fundingopps.cos.com/alerts/129920>

For more information please contact Dr. Kate Hayes-Ozello, College of Veterinary Medicine Grants Support Office at Kathleen.Hayes-Ozello@cvm.osu.edu or Ms. Michele Morscher at Michele.Morscher@cvm.osu.edu

WHAT YOU NEED TO KNOW

Transfer of Animals

Investigators may transfer animals between IACUC approved protocols. Such transfers must be authorized by University Laboratory Animal Resources (ULAR) using the “Request for Animal Transfer Form.” Contact ULAR to obtain a transfer form or for assistance with an animal transfer.

Adoption of Animals

IACUC approval is required for animals to be adopted at the end of the study. The adoption process must be coordinated through ULAR veterinarians who will ensure completion of the required paperwork (i.e. Adoption form). In the case of USDA - covered species, the ULAR veterinarian or a College of Veterinary Medicine Behavioral Specialist will perform an assessment of the animal and determine if it has a behavioral profile appropriate for adoption. Attempts to identify potential homes for these research animals should be done discreetly, in a timely manner and under no circumstances will animals be transferred to an intermediate handler (Humane Society, County Shelter, foster home) for placement. (Emails to listserves or pictures of animals to be adopted posted in public areas is not considered discreet.)

Animals used in biohazardous research or ones with physical or behavioral abnormalities are not good candidates for adoption and will not be adopted out.

<http://orrrp.osu.edu/iacuc/osupolicies/guidelines/Transfer.cfm>